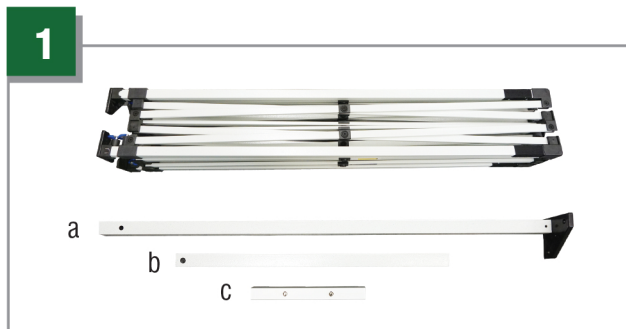
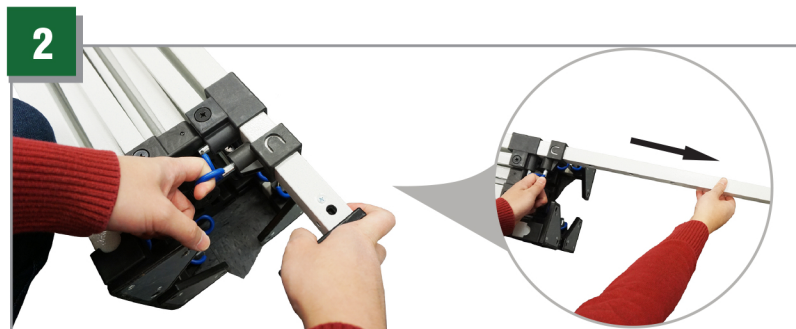


Extended Leg Attachment Installation

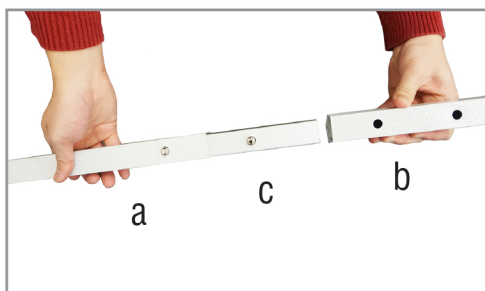
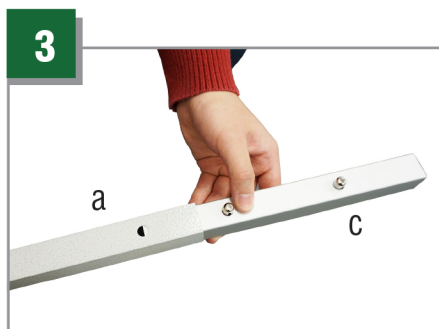
for Aluma® and Classic® Frames



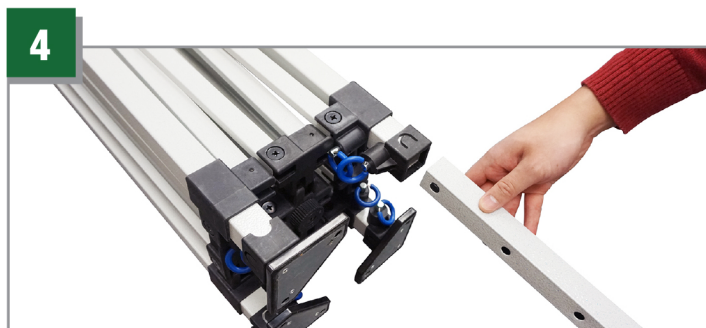
Carefully lay your Caravan® frame on its side (recommend 2 people)



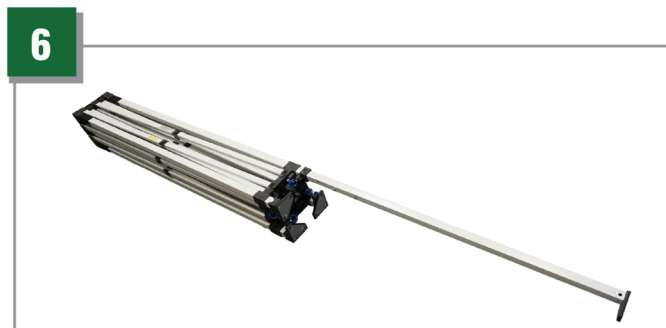
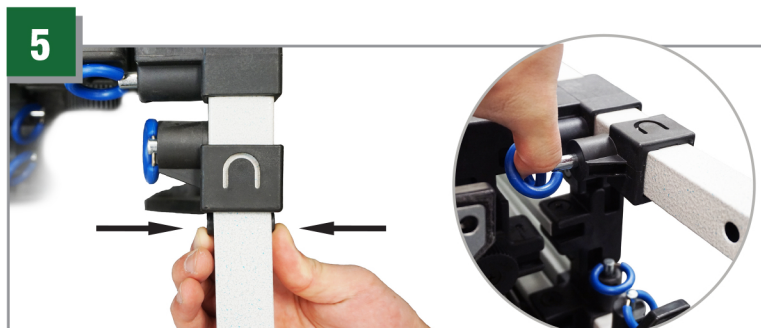
Starting with any inner leg, pull on the pull pin rings while simultaneously pulling the inner leg out. Continue until the inner leg is completely out of the frame. Continue process for all inner legs.



To assemble the Extended Leg Attachment, attach the portion with footpad (a) to the center attachment piece (c). Then, attach portion (b) to the center attachment piece (c). Make sure the push buttons are fully engage on both sides.



With the footpad facing toward the inside of the frame, along with the holes on the Extended Leg Attachments facing the pull pin ring, slide the leg into the square hole where you initially took out the inner leg.



While putting the Extended Leg Attachments into the frame, squeeze the two black buttons at the tip to allow entry into the frame. Pull the pull pin ring on the frame so the Extended Leg Attachment will go in smoothly.

Continue steps 4 and 5 for the remaining legs.